



STAUFF TEST TECHNICAL INDEX AND SPECIAL SOLUTIONS

STAUFF TEST



STAUFF
ANGLIA



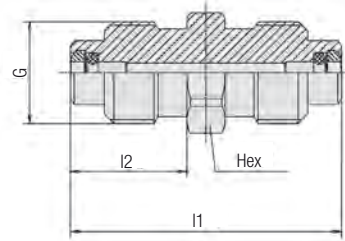
Stauff Anglia Limited

405 Coppersmith Way | Wymondham | Norfolk NR18 0WY

T: 01953 857158 F: 01953 857159 E: Sales@stauffanglia.co.uk

www.stauffanglia.co.uk

**Hose Connector
SSV**



Sealings

Internal sealings made of FPM (Viton®).

Metal Parts

Standard material: Steel, zinc/nickel-plated = **C6F (CrVI-free)**

Standard material SSV15:

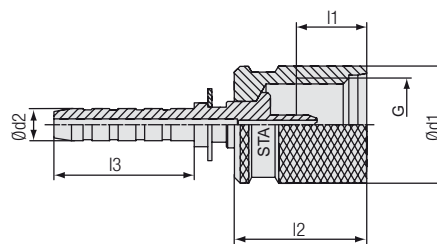
Steel, black zinc/nickel-plated = **C6F (CrVI-free)**

For ordering **V2A (1.4305 / AISI 303)** replace "C6F" with "V2A".

For ordering **V4A (1.4571 / AISI 316Ti)** replace "C6F" with "V4A".

Thread	Dimensions (mm/in)			Order Codes
	l1	l2	Hex	
M16 x 2	42,5	18,5	17	SSV20-C6F
	1.67	.73	.67	
M16 x 1,5	42,5	18,5	17	SSV15-C6F
	1.67	.73	.67	
S12,65 x 1,5	31	12,5	14	SSV12-C6F
	1.22	.49	.55	

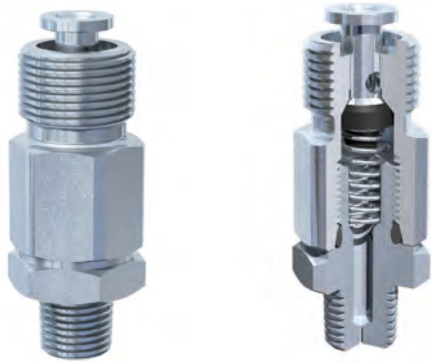
**Sampling Hose Adaptor
SHA**



Metal Parts

Standard material: Steel, zinc/nickel-plated = **C6F (CrVI-free)**

Ød1	Ød2	Dimensions (mm/in)				G	Order Code
		l1	l2	l3			
22	5,5	13	23	24	18	SHA20-5,5MM-C6F	
.87	.22	.51	.91	.94	.71		

Special Test Coupling Solutions
 STAUFF Test


Pressure Test Connection for Compressed-Air Pneumatic Braking Equipment (according to ISO 3583)



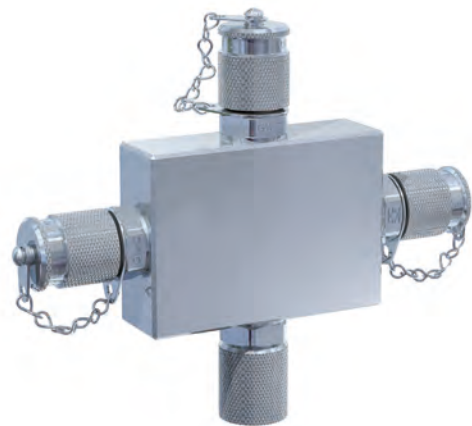
Test Coupling with Female Connection Port



Gauge Adaptor with Test Coupling



Banjo Fitting with Test Coupling



Triple Manifold Block with Test Couplings

Custom-designed test coupling solutions in addition to the Original-STAUFF-Test range according to customers specifications or based on STAUFF developments.

If you have similar requirements please consult STAUFF.

Port Connections and Sealing Details

<p>Type A</p>	<p>Type A - Threaded port according to factory standard Sealing: O-ring Type A</p>			
	Thread	Dimensions (mm/in)		
G	d1 +0,1	t1 min.	t2 min	
M8 x 1	9,5 .37	11 .43	15,5 .61	
M10 x 1	11,5 .45	12 .47	16,5 .64	

<p>Type B and C</p>	<p>Type B and C - Threaded port type X acc. to DIN 3852 Part 1 and 2; ISO 9974-1 (metric); ISO 1179-1 (inch) Sealing: Metal joint Type B / Elastomeric sealing Type C</p>				
	Thread	Dimensions (mm/in)			
G	d1 min.	t1 min.	t2 min.	a max.	
M10 x 1	15 .59	8 .31	10 .39	1 .04	
M12 x 1,5	18 .71	12 .47	15 .59	1,5 .06	
M14 x 1,5	20 .79	12 .47	15 .59	1,5 .06	
M16 x 1,5	23 .91	12 .47	15 .59	1,5 .06	
M18 x 1,5	25 .98	12 .47	15 .59	2 .08	
M20 x 1,5	27 1.06	14 .55	17 .67	2 .08	
M22 x 1,5	28 1.10	14 .55	17 .67	2,5 .10	
G1/8	15 .59	8,5 .33	10,5 .41	1 .04	
G1/4	20 .79	12,5 .49	15,5 .61	1,5 .06	
G3/8	23 .91	12,5 .49	15,5 .61	2 .08	
G1/2	28 1.10	14,5 .57	18,5 .73	2,5 .10	

<p>Type D</p>	<p>Type D - Parallel threaded port type Z according to DIN 3852 Part 2 (inch) Sealing: Taper Type D suitable sealant required</p>		
	Thread	Dimensions (mm/in)	
G	t1 min.	t2 min.	
Rp1/8	5,5 .22	9,5 .37	
Rp1/4	8,5 .33	13,5 .53	
Rp3/8	8,5 .33	13,5 .53	
Rp1/2	10,5 .41	16,5 .65	

Port Connections and Sealing Details

Type D	Type D - Taper threaded port according to ANSI/ASME B1.20.1-1983 (NPT) Sealing: Taper Type D suitable sealant required		
	Thread	Dimensions (mm/in)	
	G	t1 min.	t2 min.
	1/8-27 NPT	6,9 .27	11,6 .46
	1/4-18 NPT	10 .39	16,4 .65
	1/2-14 NPT	13,6 .54	22,6 .89

Type E	Type E - Threaded port according to ISO 6149-1 (metric); ISO 11926-1 (UNF) Sealing: O-ring Type E							
	Thread	Dimensions (mm/in)						
	G	d1 +0,1	d2 min.	t1 min.	t2 min.	a +0,4	b max.	z° ±1°
	M10 x 1	11,1 .44	16 .63	10 .39	11,5 .45	1,6 .06	1 .04	12°
	M12 x 1,5	13,8 .54	19 .75	11,5 .45	14 .55	2,4 .09	1,5 .06	15°
	M14 x 1,5	15,8 .62	21 .83	11,5 .45	14 .55	2,4 .09	1,5 .06	15°
	M16 x 1,5	17,8 .70	24 .94	13 .51	15,5 .61	2,4 .09	1,5 .06	15°
	M22 x 1,5	23,8 .94	29 1.14	15,5 .61	18 .71	2,4 .09	2 .08	15°
	M27 x 2	29,4 1.16	34 1.34	19 .75	22 .87	3,1 .91	2 .08	15°
	5/16-24 UNF	9,1 .36	17 .67	10 .39	12 .47	1,9 .07	1,6 .06	12°
	7/16-24 UNF	12,4 .49	21 .83	11,5 .45	14 .55	2,4 .09	1,6 .06	12°
	1/2-20 UNF	14 .55	23 .91	11,5 .45	14 .55	2,4 .09	1,6 .06	12°
	9/16-18 UNF	15,65 .62	25 .98	12,7 .50	15,5 .61	2,5 .10	1,6 .06	12°
	7/8-14 UNF	23,95 .94	34 1.34	16,7 .66	20 .79	2,5 .10	2,4 .09	15°